

# Prescribed Burn Management Plan

Prepared For:

FR [i\*æ]

Šæ } ^ } & ^ a ~ i \*

⊕ 11 € G

## Burn Unit Legal Description

<u>County</u>	<u>Section</u>	<u>Qtr/Sec</u>	<u>Township</u>	<u>Range</u>
Ö^æà[!}	î		ÍP	FY

Acres: FË

### **PRECAUTION**

This burn plan was prepared to assist you in conducting a prescribed burn on the unit described. There are inherent risks associated with conducting any prescribed burn.

These risks could result in unforeseen liabilities and jeopardize the safety of you, others, and other real property. Failure to follow and implement all portions of this burn plan could increase these risks.

If conditions or land practices on your property or adjacent properties change, this burn plan is no longer valid. Contact your district wildlife biologist to secure a new burn plan.

The Division of Fish and Wildlife strongly encourages you to seek the assistance of qualified professionals, specifically trained in prescribed fire management and fire suppression when conducting any prescribed fire.

Prepared By:

Ó @ã Á :æ ^ |

Q áææ æ Ö æ á } Á - Áæ Ö B Á æ á æ

œ F E Á Æ Ü æ Á æ @ æ Á H

P [ i c @ ^ } [ ]

⊕ 11 G Í

⊕ F G Á G E 11 Í

Date Prepared:

1 8 F 8 E F I

<u>County</u>	<u>Section</u>	<u>Qtr/Sec</u>	<u>Township</u>	<u>Range</u>	<u>Acres</u>
Dearborn	6		5N	1W	1.5

**Management Objective of Burn**

To reduce the amount of vegetative debris in advance of planting.

**Description of Burn Unit** (fuel types, topography)

Fuel type: tall fescue and smooth brome grasses. Topo: Moderate to severe slopes; majority of slope is NE aspect.

**Description of Adjacent Lands:** (fuel types, topography)

Woodlands on three sides and short grass hay/pasture on the southeast. Ridgetop field with downslopes on all sides.

**Areas of Special Concern:** (Safety concerns, smoke sensitive areas, structures, neighbors)

Most concern is to contain fire from escaping to the southeast into grass field. Possible smoke sensitive residences to the north and east.

**Pre-Burn Site Preparation Required:**

Control lines are 6-8 feet wide strips of disced, bare mineral soil. Inspect/insure there is no dry fuel material crossing firebreak that will provide potential escape of fire. Completely soak w/water any section of the firebreak where fire may potentially escape.

**Equipment Needed:**

<b>Cellular Phones</b>	2	<b>Trucks 4x4</b>	0	<b>Other:</b> Mobile water supply (ATV) w/minimum 15 gallon capacity and w/handgun sprayer.
<b>BackPack Sprayers</b>	1	<b>Quadrunners</b>	1	
<b>Drip Torches</b>	1	<b>Flappers</b>	4	
<b>Fusees</b>	0	<b>Rakes</b>	2	

**Personnel Needed:**

1-ignition specialist; 3-control line personnel; 1-ATV operator.

<u>County</u>	<u>Section</u>	<u>Qtr/Sec</u>	<u>Township</u>	<u>Range</u>	<u>Acres</u>
Dearborn	6		5N	1W	1.5

**Persons to be Contacted:** (To be filled out by landowner)

Contact	Telephone Number	Day Before Burn	Day of Burn
Fire Department		Yes	Yes
County Sheriff		Yes	Yes
Neighbor		Or Sooner	Yes
Neighbor		Or Sooner	Yes
Neighbor		Or Sooner	Yes
Neighbor		Or Sooner	Yes
Neighbor		Or Sooner	Yes
Neighbor		Or Sooner	Yes

**Appropriate Burning Apparel:**

All persons assisting with the burn should wear the following apparel at all times:

- Hard hat
- Leather gloves
- Eye protection
- Leather boots (Lace-up, lug-sole, 8-inch minimum height)
- Handkerchief (for covering mouth and nose)
- Fire resistant trousers and shirt (if Nomex is not available, user clothing that is 100% cotton or other natural fiber. Do not use any cotton/synthetic or 100% synthetic blends as inner or outer ware. These materials will melt and could cause serious burns. Do not wear coveralls.)

**Proper Handling of Fusees and Signal Flares:**

Fusees and signal flares are devices that can be used instead of a drip torch to initiate a prescribed burn. Fusees are elongated signal flares that last longer and allow the user to remain more upright when using the flare to ignite vegetation. Both are ignited by striking a friction cap (attached to one end of the flare) against the exposed end. The following precautions should always be followed when using these devices.

- Always read and follow all manufacturer warnings, precautions, and safety instructions that come with fusees and signal flares.
- Fusees and flares drip extremely hot, molten materials that can burn through clothing and cause serious burns. Always hold fusees and flares downward and well away from your body.
- Fusees and flares emit caustic smoke; do not breathe the fumes.
- The flame of fusees and flares is extremely bright. Do not look directly at flame.
- When igniting, always hold fusees and flares downward and away from your body, and strike the friction cap away from your body.
- Fusees and flares drip constantly. Do not ignite a fusee or flare in an area that you do not want burned. Do not ignite a fusee or flare until you are ready to burn.
- Keep burning fusees and flares well away from other objects and people.
- Never store fusees and flares with or close to other flammables or ignition sources.
- Do not leave burning fusees or flares unattended.

<u>County</u>	<u>Section</u>	<u>Qtr/Sec</u>	<u>Township</u>	<u>Range</u>	<u>Acres</u>
Dearborn	6		5N	1W	1.5

**Acceptable Burning Parameters** (Burning should occur within **ALL** the specified parameters.)

Allowable Time of Year	<u>October / November</u>				
Allowable Relative Humidities	40 to 60	<u>% Relative Humidity</u>			
Allowable Wind Speeds	4 to 8	<u>mph</u>			
Allowable Temperatures	20 to 79	<u>degrees Fahrenheit</u>			
Maximum Allowable Days Since Last Rain	7 days				
Allowable Wind Directions (Checked Only)	<input checked="" type="checkbox"/> North	<input checked="" type="checkbox"/> South	<input checked="" type="checkbox"/> East	<input checked="" type="checkbox"/> West	
Allowable Firing Methods	<u>Strip-Head</u>				

**Day of Burn Check List**

Does the weather forecast meet the **"Acceptable Burning Parameters"** listed above?

**WARNING! If a front is expected to pass through the area on the day the burn is planned, DO NOT BURN!**

( Fill in blanks below)

**Expected Lowest Relative Humidity** \_\_\_\_\_  
**Expected Maximum Wind Speed** \_\_\_\_\_  
**Expected High Temperature** \_\_\_\_\_  
**Days Since Last Measurable Rain** \_\_\_\_\_  
**Expected Wind Direction** \_\_\_\_\_

- Have all "Persons To Be Contacted" been properly notified?
- Have all "Pre-Burn Site Preparations" been completed, checked and functional
- Do you have all the "Equipment Needed" on site and is it functioning properly?
- Do you have all the "Personnel Required" on site?
- Are all personnel physically fit to perform potentially strenuous activity?
- Have all personnel been briefed on the prescribed burn plan and know their assignments?
- Are all personnel wearing "Appropriate Burning Apparel"?
- Is the weather forecast expected to be favorable throughout the entire proposed burn time?
- Do you have a working cellular phone with the telephone number of the local fire department entered?
- In your opinion can the burn be carried out according to the plan in a safe manner

**If the answer to ANY of the above questions is "NO", then DO NOT BURN!**

**If the answer to ALL of the above questions is "YES", then we strongly recommend that you conduct a small, test burn prior to implementing the burn plan.**

<u>County</u>	<u>Section</u>	<u>Qtr/Sec</u>	<u>Township</u>	<u>Range</u>	<u>Acres</u>
Dearborn	6		5N	1W	1.5

## Sources of Local Weather Information

It is important to have the most up to date weather information prior to initiating a burn, especially information concerning current and expected relative humidities, wind speeds, and temperatures. The following is a list of possible local sources of weather information:

- \* NOAA weather broadcasts on 162.400, 162.425, 162.450, 162.475, 162.500, and 162.525 MHz.
- \* Many agricultural supply and feed stores now have DTN weather satellite links.
- \* City, Municipal, or other local airports
- \* Local weather stations
- \* Internet websites:

**www.weather.com** - Click on Local Outlook and then Click on Hour By Hour Forecast Details  
**iwin.nws.noaa.gov/iwin/in/in.htm** - Click on Hourly Report or Zone Forecast buttons

## In Case Of An Emergency Or Escaped Fire

In case of an emergency or escaped fire:

- \* Call 911.
- \* Move all persons to safety zones, such as:
  - Man-made firebreaks,
  - Paved, gravel, or dirt roads,
  - Permanent bodies of water, or
  - Areas already blackened by fire.
- \* Contact all neighbors that may be potentially effected.

## Laws Applicable to Prescribed Burning Under This Burn Plan

According to 326 IAC 4-1-3

(1) A person may open burn the following: (A) vegetation from a farm, orchard, nursery, tree farm, drainage ditch, or cemetery; (B) Wood products derived from pruning or clearing a roadside by a county highway department; (C) Wood products derived from the initial clearing of a public utility right-of-way so long as the open burn occurs in an unincorporated area; (D) Undesirable wood structures on real property; (E) Clean petroleum products for the purpose of maintaining or repairing railroad tracts, including the railroad rights-of-way, but not including railroad ties.

(2) All open burning that is allowed under this subsection must comply with the following conditions: (A) A person who open burns shall extinguish the fire if the fire creates a nuisance or a fire hazard; (B) Burning may not be conducted during unfavorable meteorological conditions such as high winds, temperature inversions, or air stagnation; (C) All fires must be attended at all times during burning until completely extinguished; (D) All asbestos-containing materials must be removed before the burning of a structure, (E) Asbestos-containing materials may not be burned.

According to IC 13-17-9-1

(a) A person may open burn the following for maintenance purposes; (1) vegetation from a farm, an orchard, a nursery, a tree farm, a cemetery, or a drainage ditch.

(b) A person who is allowed to open burn under subsection (a) is not required to obtain a permit or any other authorization from the department, a unit of local government, or a volunteer fire department before conducting the open burning.

# Fire Complexity Rating Score

**Prepared For:**

Jason Morgan  
5235 Kirby Street  
Lawrenceburg  
IN 47025

## Burn Unit Legal Description

<u>County</u>	<u>Section</u>	<u>Qtr/Sec</u>	<u>Township</u>	<u>Range</u>
Dearborn	6		5N	1W

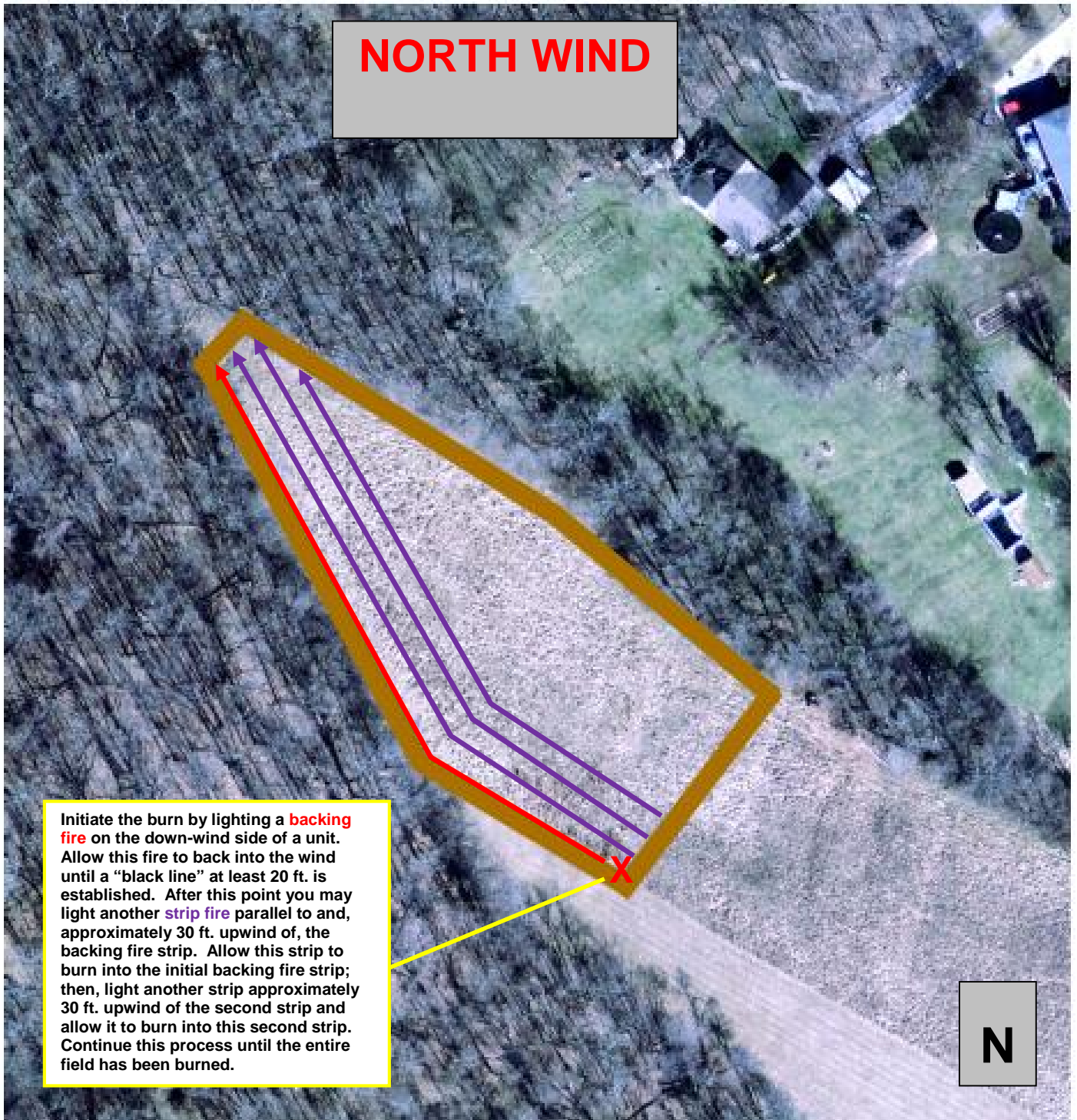
Acres: 1.5

Firing technique:	Strip-Head	6
Fuel model outside:	Short Grass	5
Fuel model inside:	Short Grass	6
Size of burn unit:	< 2 acres	1
Days since last 1/2" rain:	7	5
Month to be burned:	October / November	8
Type of control lines:	Plowed / Rotovated	8
Risk of escape %:	< 5%	1
Outside burn area valuables:	Grass / Nothing	2
Availability of sup. resources:	Moderate	6
Minimum relative humidity (%):	40	3
Maximum wind speed (mph):	8	4
Maximum temperature (F):	79	7
Time of day:	1 PM	13
<b>Total Score:</b>		<b>75</b>

**Type II Burn Plan = 85 or less**

# JASON MORGAN

## Dearborn County, Indiana



**X** IGNITION POINT

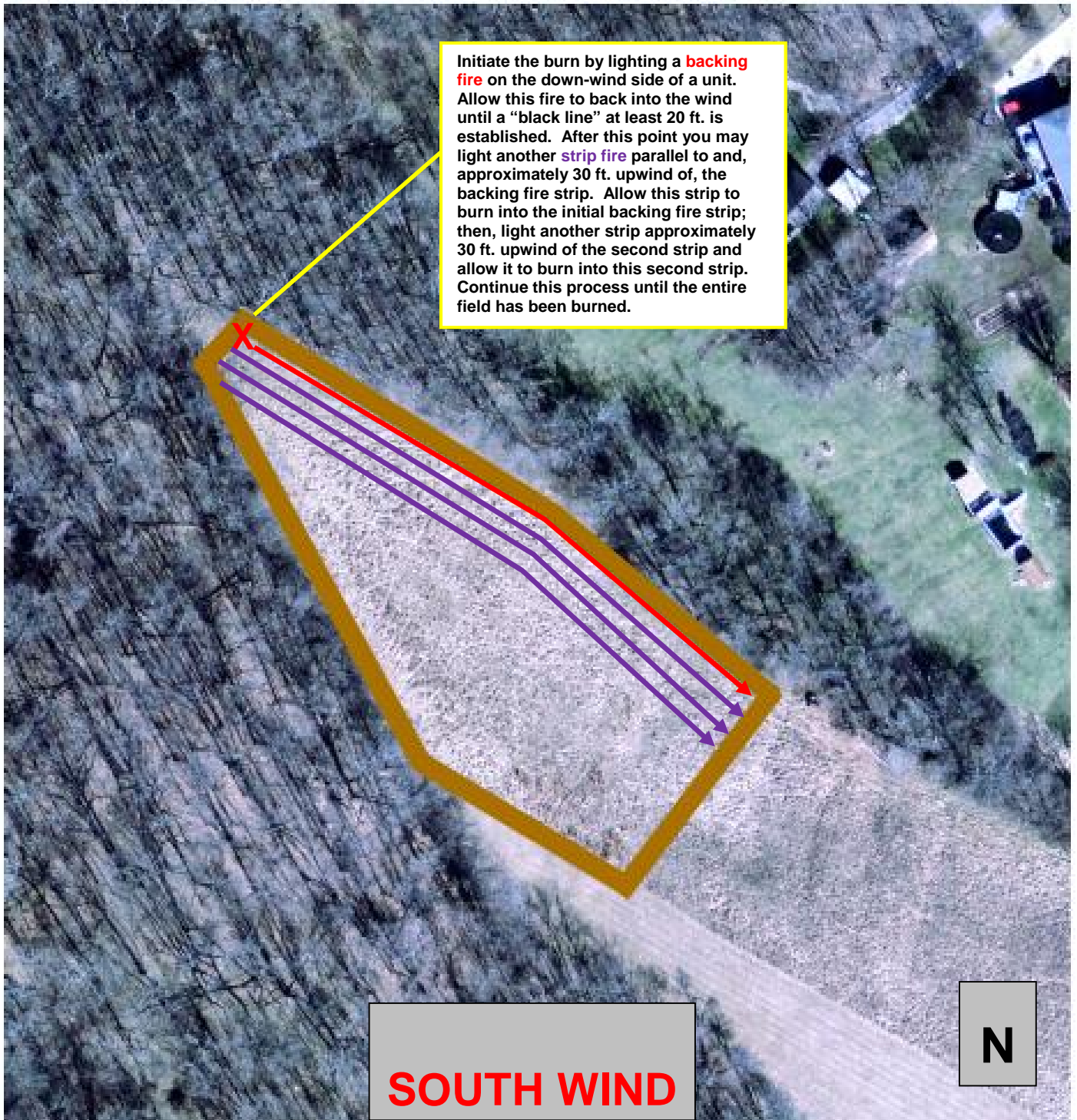
**→** DIRECTION OF BACKING FIRE IGNITION

**—** CONTROL LINES

**→** DIRECTION OF STRIPPING FIRE IGNITION

# JASON MORGAN

## Dearborn County, Indiana

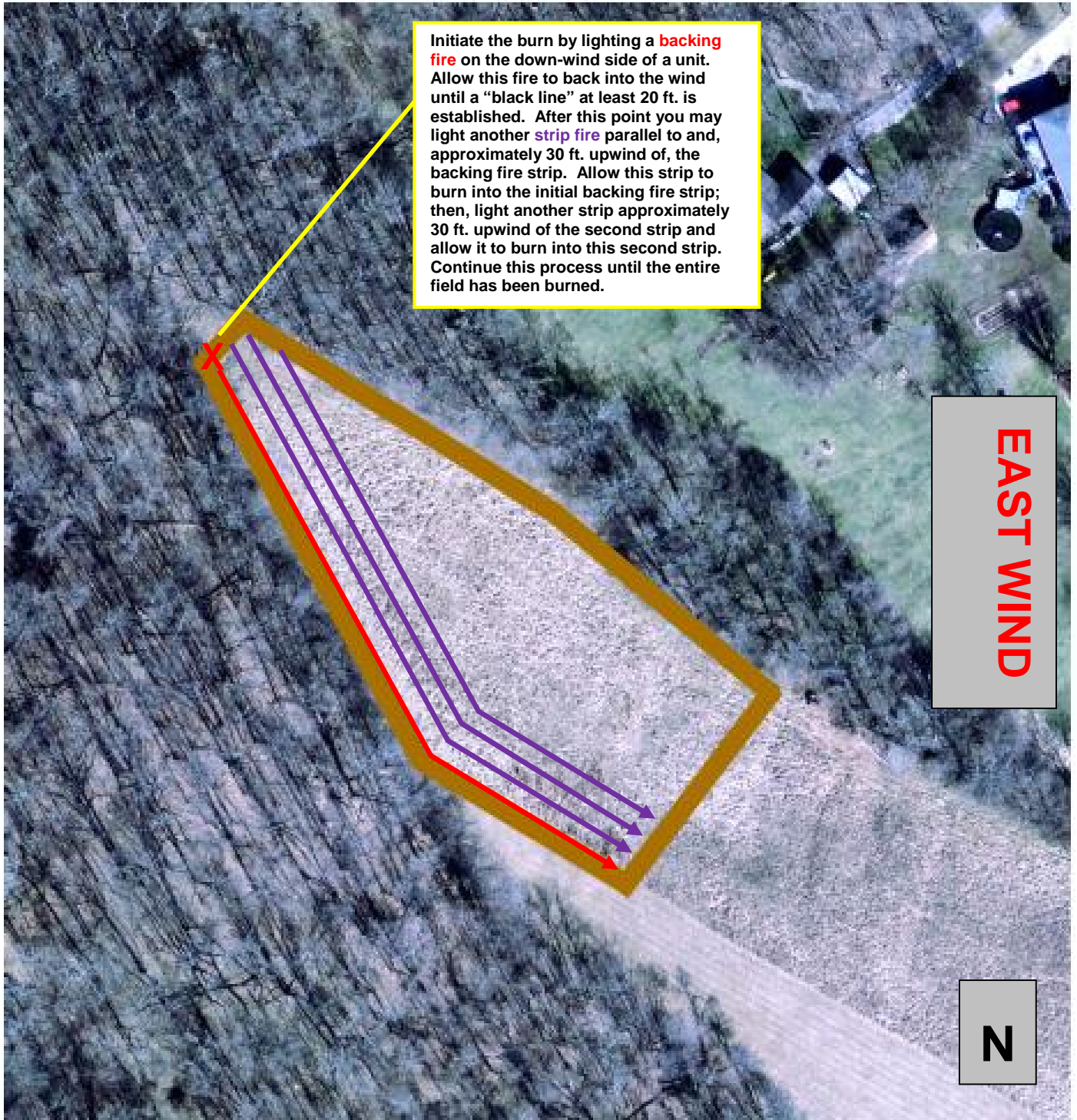


- X** IGNITION POINT
- DIRECTION OF BACKING FIRE IGNITION
- CONTROL LINES
- DIRECTION OF STRIPPING FIRE IGNITION



# JASON MORGAN

## Dearborn County, Indiana



**X** IGNITION POINT

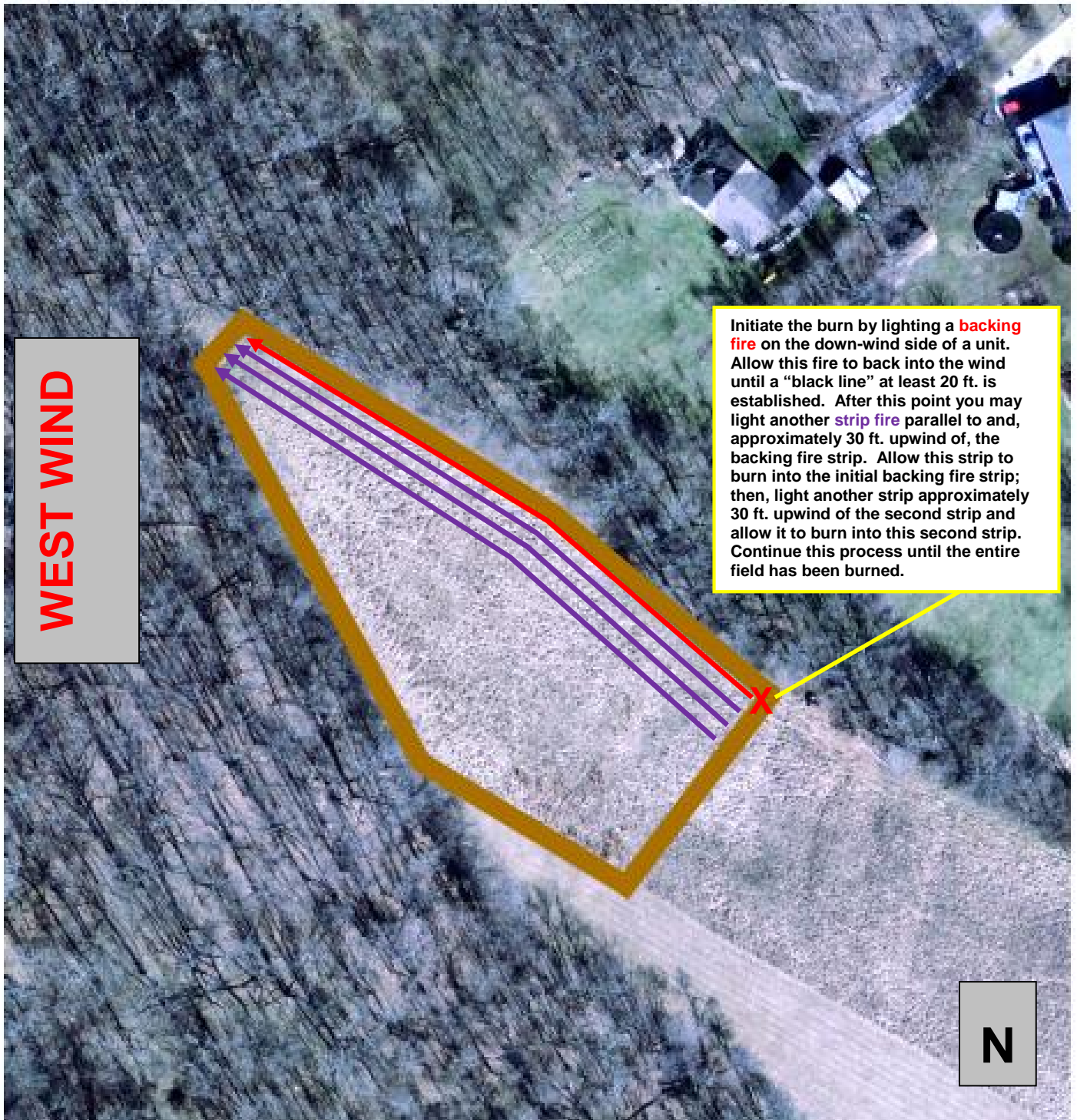
**→** DIRECTION OF BACKING FIRE IGNITION

**—** CONTROL LINES

**→** DIRECTION OF STRIPPING FIRE IGNITION

# JASON MORGAN

## Dearborn County, Indiana



**X** IGNITION POINT

**→** DIRECTION OF BACKING FIRE IGNITION

**—** CONTROL LINES

**→** DIRECTION OF STRIPPING FIRE IGNITION